



THE 2023

Recycler

La Crosse County

Solid Waste System

www.lacrossecounty.org/solidwaste

SERVING

La Crosse County WI,
Houston County MN, and
Surrounding Counties

**Please Keep
For Future
Reference!**

Mattress RECYCLING



1. When you purchase a new mattress, ask the local mattress store to recycle your old one; or
2. For home pick-up of an old mattress, without the purchase of a new one, contact a hauler that will recycle your mattress; or
3. Take your mattress to the Residential Drop-off area at the County Landfill for a fee or contact Hilltopper Refuse & Recycling at 608-783-6727, to find other drop-off locations.

Habitat for Humanity Restore



OPEN TO THE PUBLIC

Habitat for Humanity La Crosse Area's ReStore is a discount home improvement store that sells new and gently used furniture, appliances, building materials, home goods, doors, windows and more. 100% of ReStore profits go back into our community to build and repair homes. Since 2006, the ReStore has diverted over 9 million pounds from the landfill. Donations to the ReStore are tax deductible, and we offer free local donation pick-ups. The ReStore is open Wednesday through Saturday from 10 am to 6 pm. To learn more or to schedule a pickup online visit:

www.habitatlacrosse.org.

**For missed pick ups of
trash or recycling, please
call your waste hauler
or municipality.**

Landfill Hours of Operation:

Summer Hours:

April - Oct.

Monday – Friday:
6:30 AM – 4:30 PM
1st and 3rd Saturdays:
9:00 AM – Noon

Winter Hours:

Nov. - March

Monday – Friday:
7:00 AM – 4:00 PM

Office Hours and Reuse Room Hours

Monday – Friday:
8:00 AM – 4:00 PM



Landfill Fees

All items dropped off will have a fee

Residential Drop-off Area: \$5 minimum or a \$120 per ton

- **Garbage** (normal household waste)
- **Large Items** (furniture, toys, bikes, stoves, grills, washers, dryers)
- **Demolition/Constuction** (wood, drywall, flooring, roofing, doors, windows, etc.)

Processing Pad: \$5 minimum or a per ton fee

For pricing visit: www.lacrossecounty.org/solidwaste

Landfill: \$15 permit fee and \$64 per ton

Mattresses & Boxsprings:

- Recycled: \$13.50 each
- Landfill: \$18 each

Freon Items: \$20 each

(refrigerator, freezer,
air conditioner, de-humidifier)

Microwaves: \$10 each

**We accept cash, check,
and credit/debit cards:
A fee will be added to use
credit/debit cards:**

- **\$1.95 on \$78 or less**
- **2.95% on \$78.01 or more**

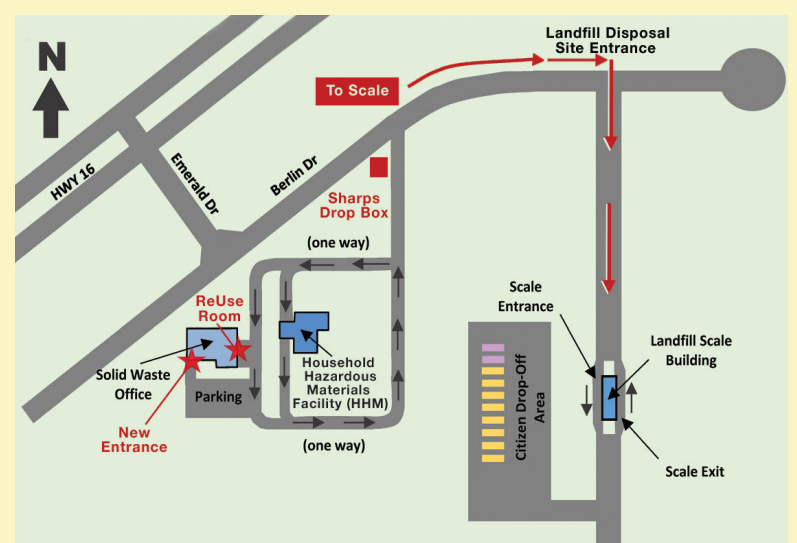
Only people authorized by site attendants may utilize the landfill facility. You must provide your own labor for unloading materials. Due to safety concerns, we do not permit salvaging once waste is placed into containers.

Information and Directions

PLEASE READ SIGNAGE

The Landfill's address is 3240 Berlin Drive. The diagram to the right illustrates the entrance to our facility (the landfill is the second right on Berlin Drive). The landfill entrance is equipped with inbound and outbound scales – all landfill customers must scale in and out. Department staff are available at the scale to direct you on disposal options and collection of payment.

For mailing, billing, and other departmental questions our office is located at 3200 Berlin Drive (first right on Berlin Drive) and parking is available on the south side of the building. We can also be reached at (608) 785-9572.



Landfill Disposal Site: 3240 Berlin Dr. La Crosse, WI 54601
HHM Disposal Site: 3202 Berlin Dr. La Crosse, WI 54601
Office: 3200 Berlin Dr. La Crosse, WI 54601
For questions please call 608-785-9572

Municipality Contacts:

La Crosse County
608-785-9572 www.lacrossecounty.org
Houston County
507-725-5800 www.co.houston.mn.us
City of La Crosse
608-789-7508 www.cityoflacrosse.org
City of Onalaska
608-781-9500 www.cityofonalaska.com
Town of Bangor
608-461-0554 www.townofbangor.com
Village of Bangor
608-486-4084 www.villageofbangor.com
Town of Burns
608-486-4272 www.townofburnswi.com
Town of Campbell
608-783-0050 www.townofcampbellwi.gov

Town of Farmington
608-857-3139 www.townoffarmingtonlax.org
Town of Greenfield
608-452-4700 www.greenfieldlaxwi.gov
Town of Hamilton
608-786-0989 www.townofhamiltonwi.org
Town of Holland
608-526-3354 www.townofhollandwi.gov
Village of Holmen
608-526-4336 www.holmenwi.com
Town of Medary
608-781-2275 www.townofmedary.com
Town of Onalaska
608-783-4958 www.townofonalaska.org
Town of Shelby
608-788-1032 www.townofshelby.com
Village of West Salem
608-786-1858 www.westsalemwi.com

Recycling Center Regulations (Residents must purchase decal. Cost \$5.00)

- Owners of nonresidential facilities must participate in an effective recycling program.
 - Owners of multiple-family dwellings are required to notify tenants of the Town’s recycling program.
 - Penalties for failure to follow recycling regulations range from \$10.00 to \$2,000.00.
 - Attendants at the Recycling Center have the right to inspect and refuse materials.
 - Cash payment should be for the exact amount. If the exact amount is not presented, the item will be refused. Checks should be made payable to the Town of Greenfield.
- Do not leave waste outside the gate or throw waste over the fence. Fines will be assessed for violators.
 - Only the attendant may operate the compactor.
 - If you have questions or concerns, direct them to one of the following:

Area Code	
Chairman Tom Jacobs	608-797-9123
Supervisor 1 Kevin Timm	608-792-4862
Supervisor 2 Chad Morris	608-317-7691
Recycling Center Manager	
Tom Ludwigson	608-792-9563
Treasurer Danny Kjos	608-485-3131
Town Clerk Jill Murphy	608-452-4700

Location

W2870 Kreibich Coulee Road.

Days & Hours (also see calendar opposite)

Summer Hours	Winter Hours
(April 1–October 31)	(November 1–March 31)
Tuesdays 4pm–7pm	Tuesdays 2pm–5pm
Saturdays 8am–1pm	Saturdays 8am–1pm

The Recycling Center is for the use of Town of Greenfield residents ONLY—not relatives or friends from outside the township.

Fluorescent Lights (No compact fluorescents)

Fluorescent lamps and lightbulbs must be separated from other items. The fee for fluorescent bulbs 4 feet or over is \$1.00. A collection box is located at the Recycling Center. We do not accept compact fluorescent bulbs.

Tires

Waste tires may be brought to the Recycling Center. Except where noted, add \$5.00 for tires on rims. Fees:

Car tires	\$7.00 each
Truck tires (pickup size)	\$7.00 each
Truck tires (large)	\$15.00 each
Bicycle tires	\$1.00 each
Bicycle tires on rims	\$2.00 each

Waste Oil and Antifreeze

Waste oil and antifreeze from residential units may be taken to the Recycling Center, where containers are available for it. Do not mix oil with antifreeze or gasoline.

Lead Acid Batteries

Lead acid batteries are collected at the Recycling Center.

General Household Trash

Place in the compactor. The compacted materials are burned at Xcel Energy to produce electricity.

Clothing

Although clothing may be placed in the compactor, it is preferable to take it to the Salvation Army, Goodwill, or another thrift shop.

Paint Cans

Cans containing dried paint may be put in the open-top bin only.

Scrap Metal

Scrap metal and iron must be separated from items that go to the County Landfill and placed in scrap metal container.

Yard Waste

Yard waste and compost materials may be brought to the Recycling Center, where an area is available for collection. You are encouraged to compost your own leaves and yard waste.

Major Appliances

Major appliances may be brought to the Recycling Center from March through November for a fee of \$20.00 for each appliance. Gas refrigerators have a \$50.00 fee.(See box at right for more information.) No food left in appliances. Major appliances are not collected in Nov., Dec., Jan., or Feb.

E-Waste

We accept electronics (computers, etc.). Fees:

TVs/monitors	\$25.00 each
Computers	\$20.00 each
VCRs, printers, DVD players, stereo amps, etc.	\$5.00 each

You may also take e-waste to the county’s Household Hazardous Materials Site. See outside of brochure for information.

Other Fee Items

Mattress/Box Springs	\$15.00/per piece
Lawn mowers	\$5.00
Riding lawn mowers	\$10.00
Construction site waste	\$20.00/pickup load \$40.00/large truckload

NOTE: Fees may be subject to change if fees paid by Town of Greenfield increase.

Landfill Items

Materials unacceptable by Xcel Energy for burning may be brought to the Recycling Center for transport to the County Landfill. Examples are:

shingles	furniture	window glass
dishes	mirrors	miscellaneous debris

Burning

- **Burn permits:** contact the Town Chairman or one of the Supervisors for a burn permit. Permits may be canceled or prohibited by the Fire Chief or Town Chairman if risk of wildfire is significant. No burn permits are issued for the St. Joseph Sanitary District.
- **What you can burn:** Only dry leaves, dry plant clippings, and dry brush may be burned, and you must have a permit in hand when burning. However, the Town recommends composting these materials yourself or taking them to the Recycling Center (see **Yard Waste** above).
- **Campfire rings:** The fire must be contained in a manufactured freestanding fire pit, ring, or pit placed at a safe distance from any structure or combustibles. Fire pits dug into the ground should be lined on the outside with gravel, brick, concrete, or rock to prevent the spread of flames across the ground.



Appliance Disposal

\$20.00 per appliance

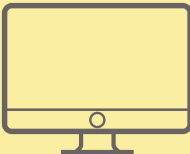
Major appliances are defined as:

- Refrigerators
Gas refrigerator \$50.00 fee
- Stoves
- Ovens
- Freezers
- Dishwashers
- Clothes washers and dryers
- Dehumidifiers
- Air conditioners
- Furnaces
- Boilers
- Water heaters
- Microwaves



Pay at site—\$20.00 per item.

Computers, televisions, and other electronic devices are accepted for a fee (see Electronics at left). They may also be taken to La Crosse County’s Household Hazardous Materials site—see outside of this brochure.



Contact Information

Greenfield Town Complex
N1800 Town Hall Road
Office . . . 608-452-4700

La Crosse County Landfill and Household Hazardous Materials Facility (HHM)
3200 Berlin Dr. • La Crosse
Phone: 608-785-9572

You will receive a brochure at the beginning of each year, so please keep this brochure!
If you misplace it, please call 608-452-4700 for a new one.

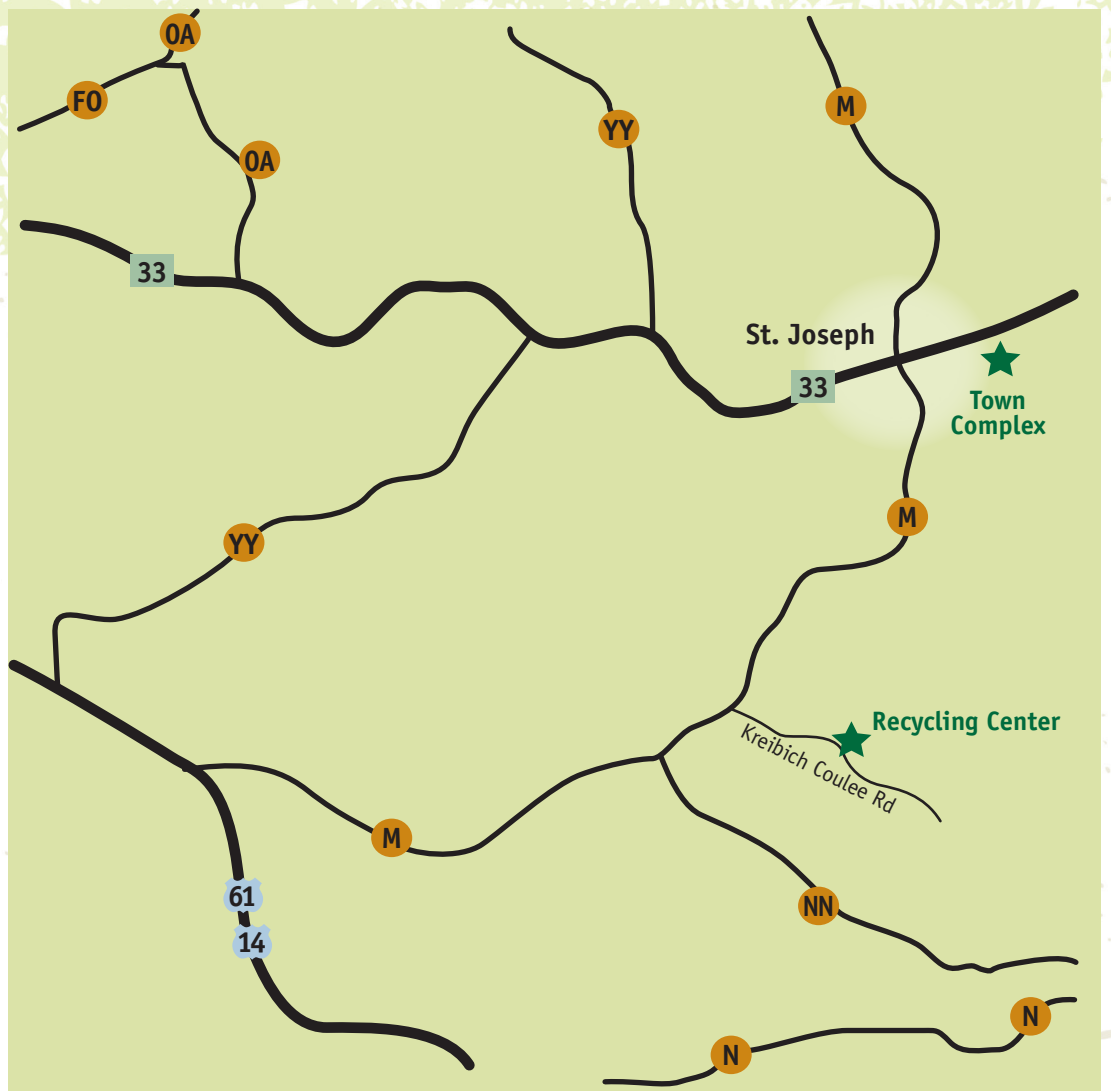
Please visit our website:
www.greenfieldlaxwi.gov

& Recycling Center—2023 Schedule

3

Recycling Center is monitored 24/7 by cameras for safety and security.

The Recycling Center is for use only when an attendant is on the property. Entering the center when closed is trespassing. Violators will be fined.



Recycling Center Schedule

W2870 Kreibich Coulee Road

Summer Hours

(April 1–October 31)
Tuesdays 4pm–7pm
Saturdays 8am–1pm

Winter Hours

(November 1–March 31)
Tuesdays 2pm–5pm
Saturdays 8am–1pm

JANUARY 2023						
S	M	T	W	T	F	S
1	2	3	4	5	6	7
8	9	10	11	12	13	14
15	16	17	18	19	20	21
22	23	24	25	26	27	28
29	30	31				

MAY 2023						
S	M	T	W	T	F	S
	1	2	3	4	5	6
7	8	9	10	11	12	13
14	15	16	17	18	19	20
21	22	23	24	25	26	27
28	29	30	31			

SEPTEMBER 2023						
S	M	T	W	T	F	S
					1	2
3	4	5	6	7	8	9
10	11	12	13	14	15	16
17	18	19	20	21	22	23
24	25	26	27	28	29	30

FEBRUARY 2023						
S	M	T	W	T	F	S
			1	2	3	4
5	6	7	8	9	10	11
12	13	14	15	16	17	18
19	20	21	22	23	24	25
26	27	28				

JUNE 2023						
S	M	T	W	T	F	S
				1	2	3
4	5	6	7	8	9	10
11	12	13	14	15	16	17
18	19	20	21	22	23	24
25	26	27	28	29	30	

OCTOBER 2023						
S	M	T	W	T	F	S
1	2	3	4	5	6	7
8	9	10	11	12	13	14
15	16	17	18	19	20	21
22	23	24	25	26	27	28
29	30	31				

MARCH 2023						
S	M	T	W	T	F	S
			1	2	3	4
5	6	7	8	9	10	11
12	13	14	15	16	17	18
19	20	21	22	23	24	25
26	27	28	29	30	31	

JULY 2023						
S	M	T	W	T	F	S
						1
2	3	4	5	6	7	8
9	10	11	12	13	14	15
16	17	18	19	20	21	22
23	24	25	26	27	28	29
30	31					

NOVEMBER 2023						
S	M	T	W	T	F	S
			1	2	3	4
5	6	7	8	9	10	11
12	13	14	15	16	17	18
19	20	21	22	23	24	25
26	27	28	29	30		

APRIL 2023						
S	M	T	W	T	F	S
						1
2	3	4	5	6	7	8
9	10	11	12	13	14	15
16	17	18	19	20	21	22
23	24	25	26	27	28	29
30						

AUGUST 2023						
S	M	T	W	T	F	S
		1	2	3	4	5
6	7	8	9	10	11	12
13	14	15	16	17	18	19
20	21	22	23	24	25	26
27	28	29	30	31		

DECEMBER 2023						
S	M	T	W	T	F	S
					1	2
3	4	5	6	7	8	9
10	11	12	13	14	15	16
17	18	19	20	21	22	23
24	25	26	27	28	29	30
31						

Center Dates:

Holidays
(Center not open)

How to Prepare Recyclables

GLASS: Jars and bottles only!

SEE NON-ACCEPTABLE MATERIALS BELOW

- Remove lids and metal rings, empty, and rinse clean.



TIN & ALUMINUM Bottles and Cans:

Pots & pans, empty paint & aerosol cans, aluminum foil, or steel cans

- NO chemicals, scrap metal, or vehicle parts, electronics
- Empty, rinse clean. Ends of cans can stay attached.

PLASTIC:

Accepted plastics: #1 #2 (bottle form only) and #5.

DO NOT recycle plastic bags, or to-go food containers (clam shell)

- Rinse Food



FOOD & BEVERAGE

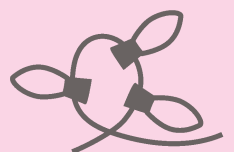
CARTONS:
Milk, juice, broth, soup, and other

- Drain liquid.
- Beverage Paper cups (no lids or straws)



WIRES:

Christmas lights, extension cords and power cords



Paper and Cardboard: Newspapers, magazines, cereal, soda and beer boxes, paperback books, phone books, paper bags, mail/junk mail. Cardboard boxes must be broken down.



Non-Acceptable Materials for Recycling - Plastic bags, kitchen garbage bags, car/specialty batteries, photographs, styrofoam, regular trash, yard waste, specialty bulbs (small incandescent/LED can go in trash), dishes, ceramic, mirrors, wood or demolition materials, computer/larger electronics, large carpet rolls, full aerosol cans and wet paint containers, (empties can go in regular trash).

NOTE:

For More Information visit www.hilltopperrefuse.com

THE 2023 La Crosse County • WI Recycler

For answers to questions, call
La Crosse County HHM program, 608-785-9999
or visit our Web site: www.lacrossecounty.org/solidwaste/hhm

Household Hazardous Materials Facility (HHM)

Free for La Crosse County, WI Residential Users (unless otherwise noted below)
Houston County, MN and surrounding Counties (Fees apply).

Acceptable Materials

- Automotive fluids
- Batteries (rechargeable, lead acid, lithium)
- Cell phones and digital cameras
- Cleaning products
- Computers (desktops, laptops, tablets)
- Computer peripherals (fax machines, hard drives, keyboards, mice, printers, scanners, speakers)
- Fluorescent light bulbs
- Lawn and garden chemicals
- Medications (non-controlled only)
- Mercury-containing devices (barometers, thermometers, thermostats, etc.)
- Microwaves and small Freon appliances **Fees Apply**
- Paints, stains, varnish and solvents
- Pool chemicals
- Propane cylinders (20# and under)
- Sharps and needles
- Smoke detectors
- TVs and computer monitors **Fees Apply**
- Vape pens/E-cigarettes
- Video devices (cable and satellite receivers, DVD players, gaming consoles, VCRs, etc.)
- Water filters (Point of Contact)

Non-Acceptable Materials

- Compressed gas cylinders (other than propane)
- Controlled substance medications
- Explosives (inc. black powder, fireworks and military munitions)
- Shock sensitive materials (picric acid, etc.)
- Radioactive materials (inc. smoke detectors)

SAVE YOURSELF A TRIP!

These items can and should go into your regular curbside trash or recycling:

- Alkaline batteries (trash)
- Dried out paint (trash)
- Empty paint and aerosol cans (recycle)
- Fertilizer without pesticide (trash)
- Ice melt and rock salt (trash)
- Incandescent light bulbs (trash)



Preparation & Transportation

Residential Dropoff Hours

Monday – Friday (year-round) 10:00 a.m. – 4:00 p.m.
1st & 3rd Saturdays (April – October only) 9:00 a.m. – Noon

Businesses and organizations by appointment only

Residential users with more than 200 lbs of material are encouraged to schedule an appointment.

Out-of-County residents are welcome to use the program on a fee basis.

FREE PRODUCT REUSE ROOM!

Over 80,000 pounds of useable household products are sorted and made available to the public in our Reuse Room annually. All items are free, but donations are appreciated. The Reuse Room is open Monday – Friday from 8 AM to 4 PM. The Reuse Room is located on the east side of the landfill office building, directly adjacent to the HHM Facility.

Safe Transportation of Hazardous Materials

1. Never mix chemicals.
2. Bring items in original containers or clearly mark contents. Tell facility technician if you are unsure what is in a container.
3. Tighten all covers and lids.
4. If a container is leaking, pack it separately in a leak-proof pail or tub.
5. Avoid spills. Place waste containers upright and place securely in the trunk or back of a truck or van. Do not transport waste containers in vehicle passenger areas.
6. Gasoline should be transported in a designated red safety container.
7. Motor oil should be transported in a durable and leak-proof container labeled with the words “Used Oil.”
8. Tape the terminal ends of batteries with clear tape to prevent arcing. Do not co-mingle batteries with chemicals.
9. Transport fluorescent bulbs securely to avoid breakage. Do not tape bulbs together.
10. Upon arrival, pull under the HHM canopy and remain in your vehicle with the engine shut off.



3202 Berlin Drive • La Crosse, WI 54601



Sharps & Needles



- Needles, syringes, auto-injectors (EpiPens) and lancets must be transported in sealed, puncture-resistant containers.
- Container options include a standard red sharps container or a thick plastic laundry detergent bottle with screw on cap. All containers must be labeled with the word “SHARPS.”
- Additional sharps collection sites can be found on the Alliance to HEAL website.
- For after-hours service, a red sharps drop box is located on Berlin Drive at the La Crosse County Solid Waste Department entrance. This drop box accepts single-use needles as well as small sharps containers. (see map above)

Use By Businesses & Organizations

The La Crosse County HHM Program is available to assist small businesses and organizations with their hazardous material disposal needs. We also offer complimentary audits to help with identifying these waste streams. For more information, call us at (608) 785-9999 or visit our website to download a VSQG qualification packet.

www.lacrossecounty.org/solidwaste/hhm